

# THE ABBOT - 2 Bedroom

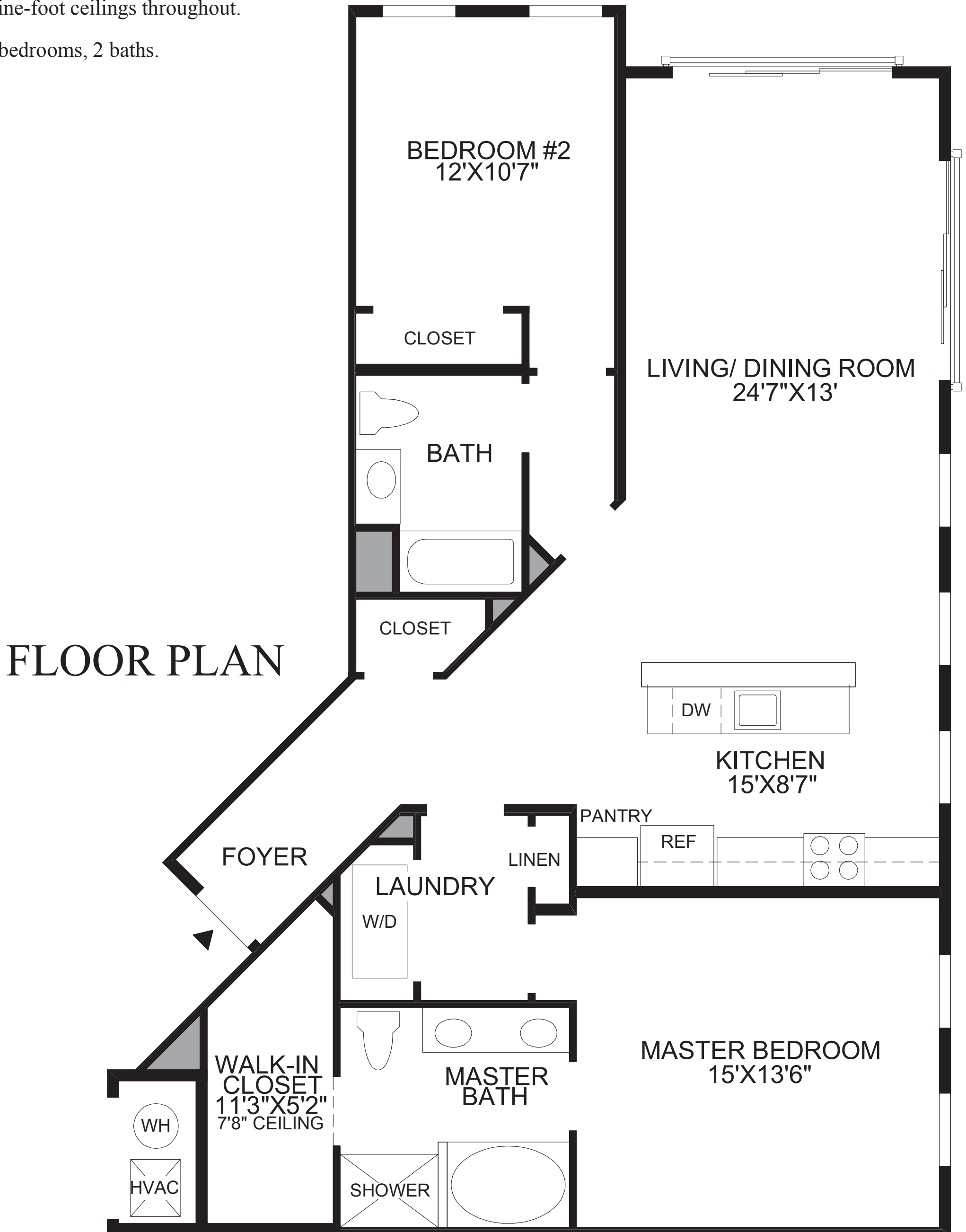
The foyer of this corner home has views of the expansive combined living room and dining room space creating a great space for entertaining guests.

The kitchen features a pantry cabinet, a center island and an open view of the combined living room and dining room.

The master bedroom includes a large walk-in closet and a private bath with a dual-sink vanity, a Roman tub, and a separate shower.

Nine-foot ceilings throughout.

2 bedrooms, 2 baths.



All dimensions are approximate, shown to the maximum dimensions of each room, and are subject to field variation. Dimensions should not be used to calculate room square footage. Some windows, exterior features, ceiling heights, and floor plans may vary with elevations. Features may also vary from community to community. Please consult a Sales Representative for details. Options purchased must be specified in exhibit B.

(NE-NSAM/41109.1) 0321 ©2011 TOLL BROTHERS, INC. (ABBOT)

**Toll Brothers**  
America's Luxury Home Builder™

tollbrothers.com

The floor plans and elevations of **Toll Brothers** homes are copyrighted. We have enforced and will continue to enforce our federal copyrights to protect the investment of our home buyers.



This insert was produced using recycled products. ♻️