

THE LATIMER - 1 Bedroom with Den

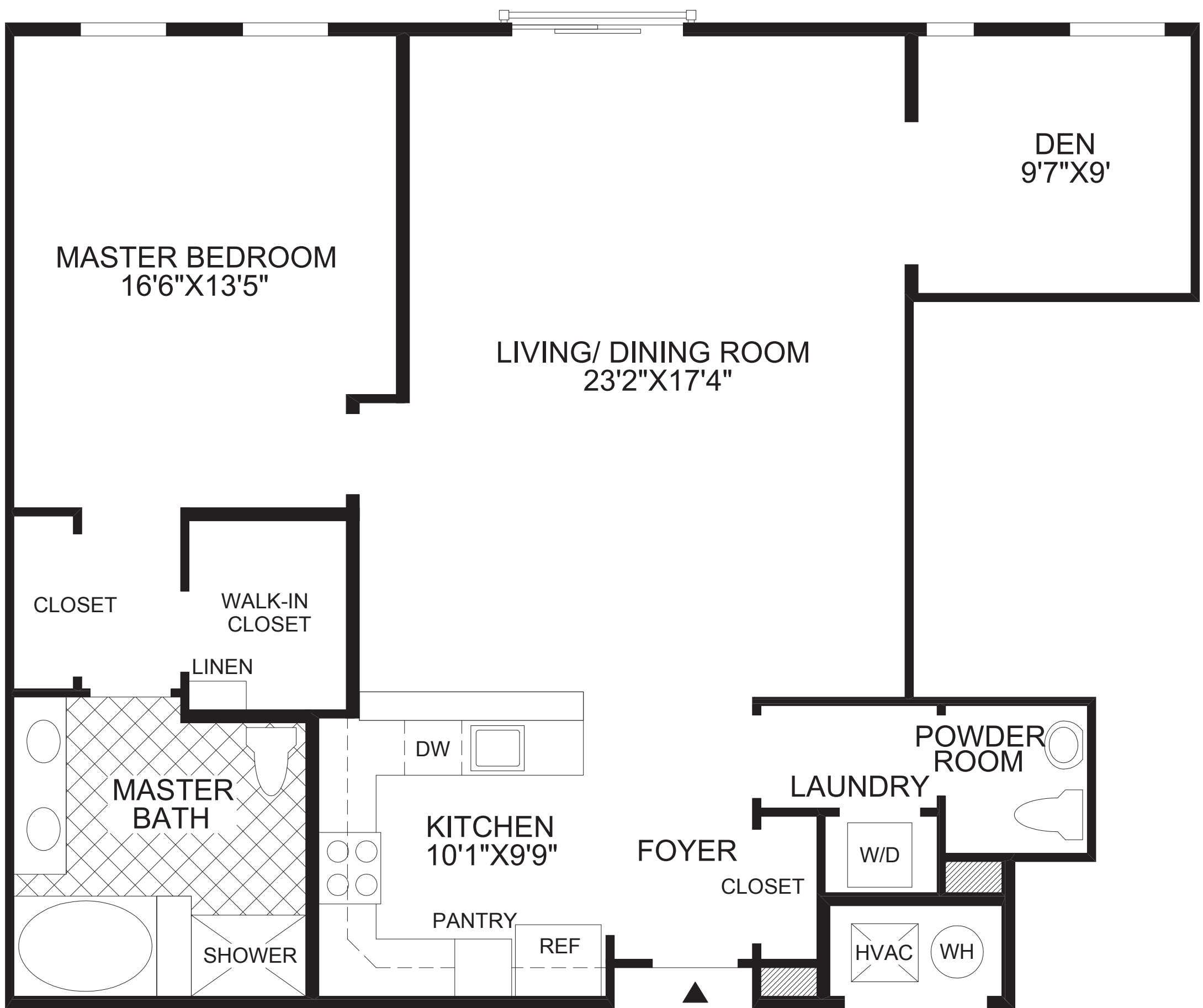
The foyer opens to the well-designed kitchen and to the combined living room and dining room, creating a wonderful space for gathering with friends and family.

The master bedroom includes a walk-in closet and a private bath with a dual-sink vanity, a Roman tub, and a separate shower.

The private den is located adjacent to the living room.

Nine-foot ceilings throughout.

1 bedroom, den, 1½ baths.



FLOOR PLAN

All dimensions are approximate, shown to the maximum dimensions of each room, and are subject to field variation. Dimensions should not be used to calculate room square footage. Some windows, exterior features, ceiling heights, and floor plans may vary with elevations. Features may also vary from community to community. Please consult a Sales Representative for details. Options purchased must be specified in exhibit B.

(NE-NSPB/33484) 0302 ©2010 TOLL BROTHERS, INC. (LATIMER)

Toll Brothers
America's Luxury Home Builder™

tollbrothers.com

The floor plans and elevations of **Toll Brothers** homes are copyrighted. We have enforced and will continue to enforce our federal copyrights to protect the investment of our home buyers.



This insert was produced using recycled products. ♻️