

THE MORAVIAN - 1 Bedroom

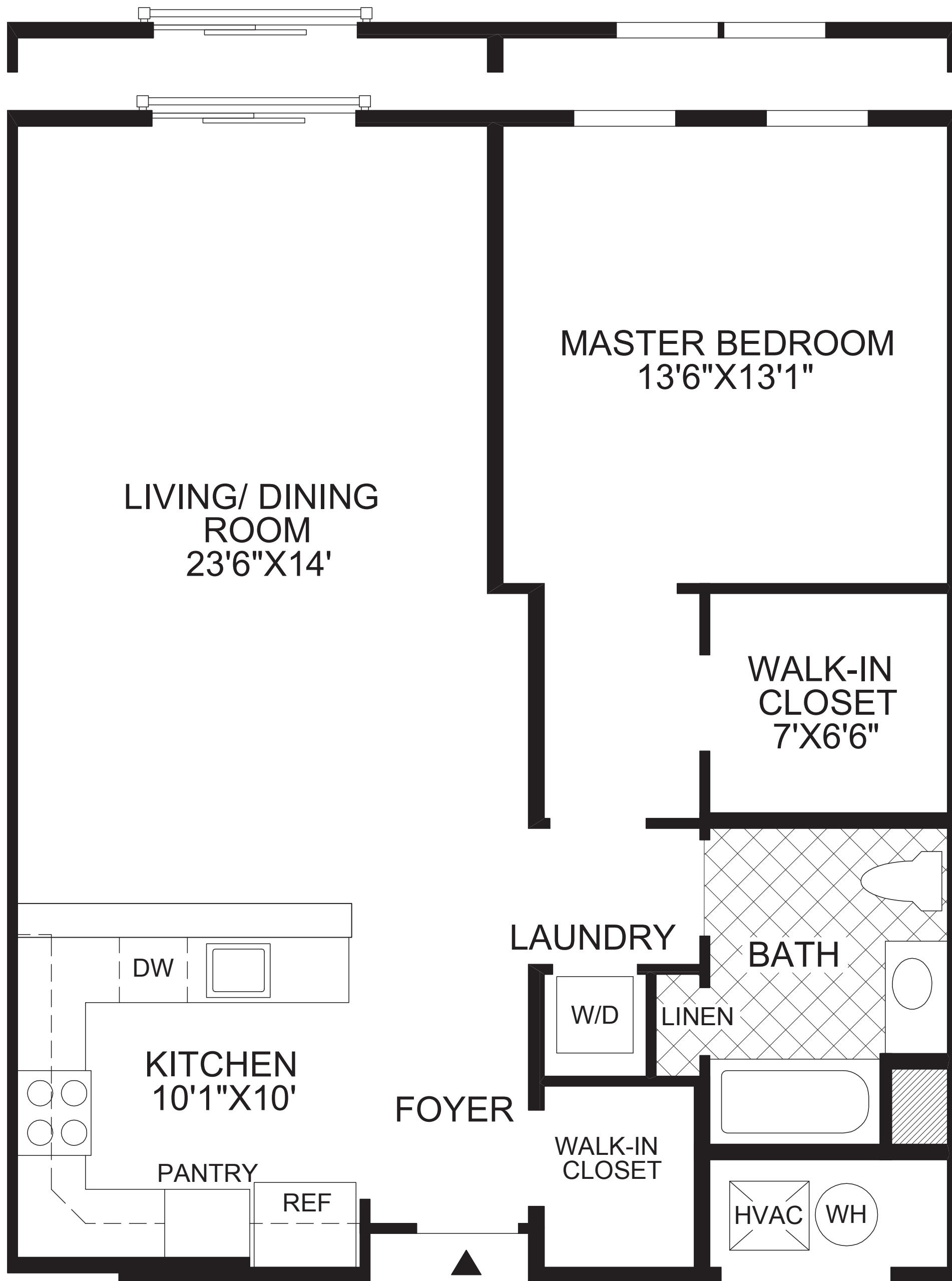
The foyer features a walk-in closet and opens to the kitchen with pantry cabinet, and to the open living area that includes a dining room and living room.

The master bedroom is complete with a walk-in closet.

Nine-foot ceilings throughout.

1 bedroom, 1 bath.

WINDOW AND EXTERIOR DOOR LOCATIONS VARY DEPENDING ON UNIT LOCATION IN BUILDING.



FLOOR PLAN

All dimensions are approximate, shown to the maximum dimensions of each room, and are subject to field variation. Dimensions should not be used to calculate room square footage. Some windows, exterior features, ceiling heights, and floor plans may vary with elevations. Features may also vary from community to community. Please consult a Sales Representative for details. Options purchased must be specified in exhibit B.

(NE-NSPB/33481) 0302 ©2010 TOLL BROTHERS, INC. (MORAVIAN)

Toll Brothers
America's Luxury Home Builder™

tollbrothers.com

The floor plans and elevations of **Toll Brothers** homes are copyrighted. We have enforced and will continue to enforce our federal copyrights to protect the investment of our home buyers.



This insert was produced using recycled products. ♻️